



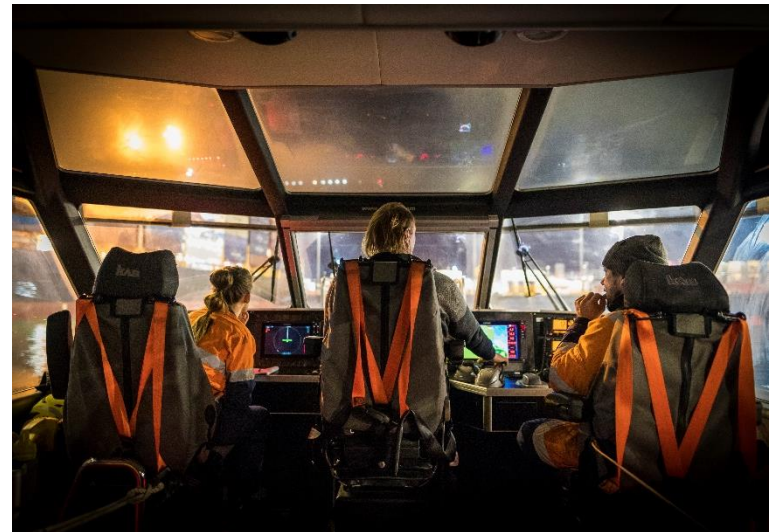
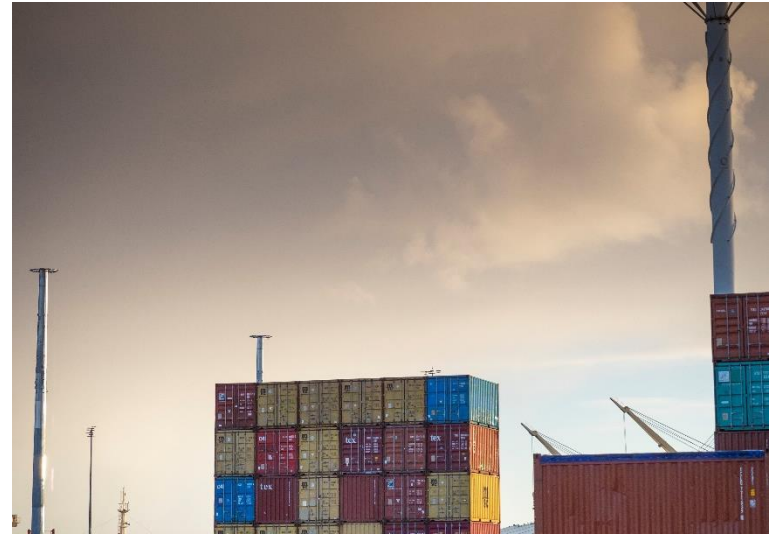
# Community Reference Group

POAL | 3 October 2018

# Agenda Item 1

## Welcome and Confirmation of Last Meeting's Minutes

- PowerPoint and minutes from previous CRG meetings available online
- Actions from last meeting –
  - > POAL to share NZIER data with CRG - **available online**
  - > POAL to send out packs to CRG with images, plans with layout and an outline of where we proceed from here – **awaiting formal feedback from UDP meeting and design sign off**
  - > POAL will send out elevations of Gladstone Rd street level view, and the street level view back towards the ferry building along Quay St, with hotel removed & carpark adjusted to reduced size. With new façade as a starting point - **to be carried over as not available yet**
  - > POAL to find out how many heavy metal shipments there will be over the year and report back to CRG, also to find resolution to loading finish times and days – **Nigel to update**
  - > POAL will find out regarding the anchorage and talk to the Marine team to see if we can see plotting of where the ships were parked – not sure we can do this, and we won't know the reasons why they were parked in the gulf – **completed**
  - > POAL check for any updates with Alistair Kirk regarding Tamaki Cycle Lane – **no official update**



# Agenda Item 2

## Annual Results

### Financials

- Reported net profit after tax was \$76.8 million compared to \$60.3m for the previous year
- Group Revenue lifted from \$222.4 million to \$243.2 million
- Underlying profit after tax was \$59.2m compared to \$55.0m last year
- Declared dividend of \$51.1 million, compared to \$51.3 million for the previous year

### Volumes

- Container volumes were up 2.2% to 973,722 TEU (Twenty-foot Equivalent Units)
- Car and light commercial vehicle volumes were up 0.1% to 297,678 units
- Breakbulk and bulk volumes (including cars & light commercial vehicles) were up 4.8% to 6.77 million tonne

### Productivity

- We were voted Best Seaport in Oceania by our customers, for the third consecutive year
- Container crane rates averaged 35.63 moves per hour, up from 34.67 the previous year
- Car dwell time averaged 2.90 days, a slight fall on the previous year's 2.93 days





## Agenda Item 3

---

### Bledisloe Crane Removal



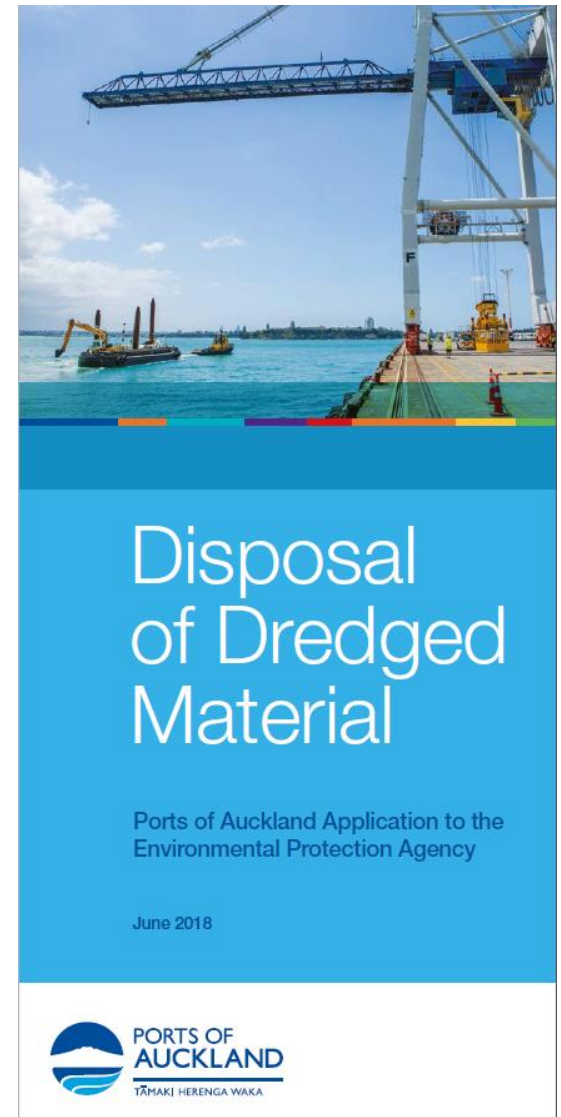
# Agenda Item 4

## Dredging Disposal

- POAL intends to apply to the Environmental Protection Agency for a 35-year consent to dispose of dredged material
- The authorised “Cuvier Dump Site” location 27 nautical miles east of Cuvier Island
- 55 individual engagements to date
- Technical / data monitoring and research completed – reports will be available shortly

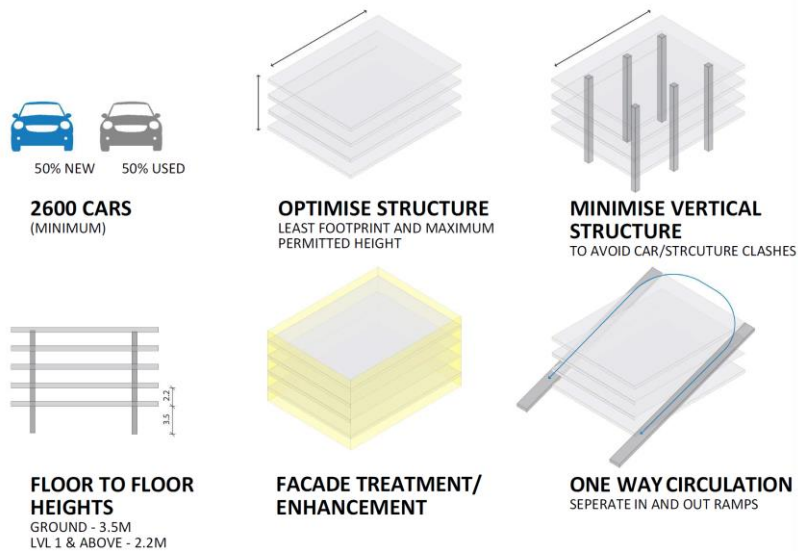
What is the timeline for the application?

1. **September 2017 – September 2018:** Technical / data research - **COMPLETED**
2. **July 2018 – October 2018:** Stakeholder engagement - **ONGOING**
3. **October 2018:** Submission of formal marine consent application to EPA.



# Agenda Item 5

## Car Handling Building - Design



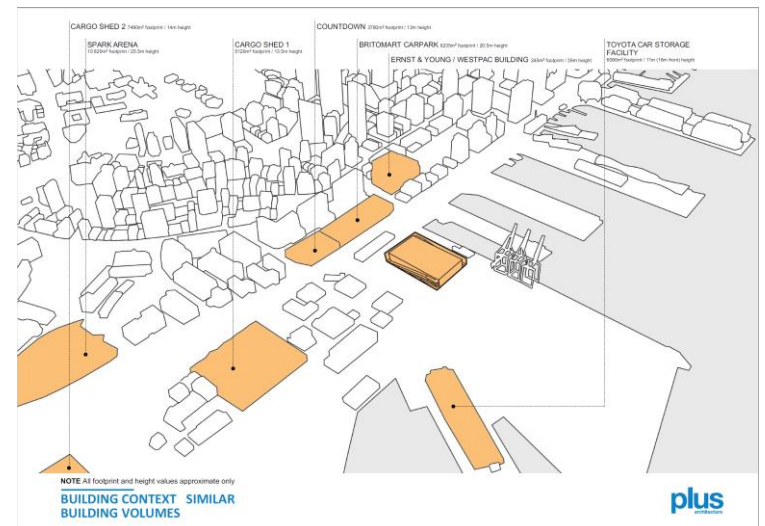
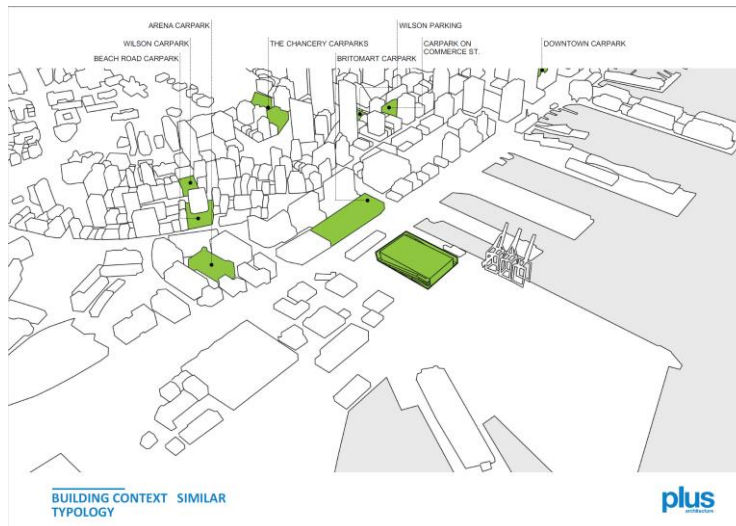
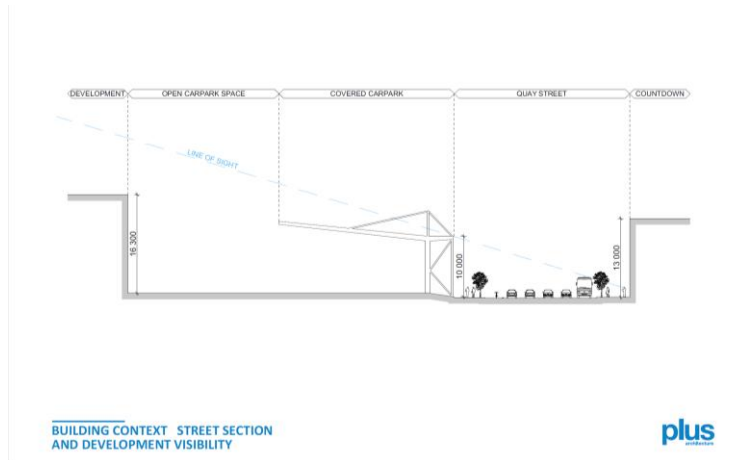
### KEY DESIGN DRIVERS

FUNCTIONAL LAYOUT - BOX FORM  
PUBLIC ADVERSE TO CAR & INDUSTRIAL PORT VIEW  
30 YEAR PORT PLAN IMAGES - GREENERY APPRECIATED  
POAL SUSTAINABILITY - CARBON NEUTRAL 2025

SCREEN CARS  
EFFICIENT TRANSPORT & STORAGE  
CONTRIBUTE TO ENVIRONMENT

# Agenda Item 5

## Car Handling Building - Context





# Agenda Item 5

## Car Handling Building – Current Render





# Agenda Item 6

## Fergusson Cranes Arrival

**Built:** ZPMC (Zhenhua Heavy Industries Co. Ltd.)  
Shanghai, 2018

**Height:** 82.3m

**Weight:** 2,100 tonnes

**Lift capacity:** 130 tonnes

**Outreach:** 21 containers across

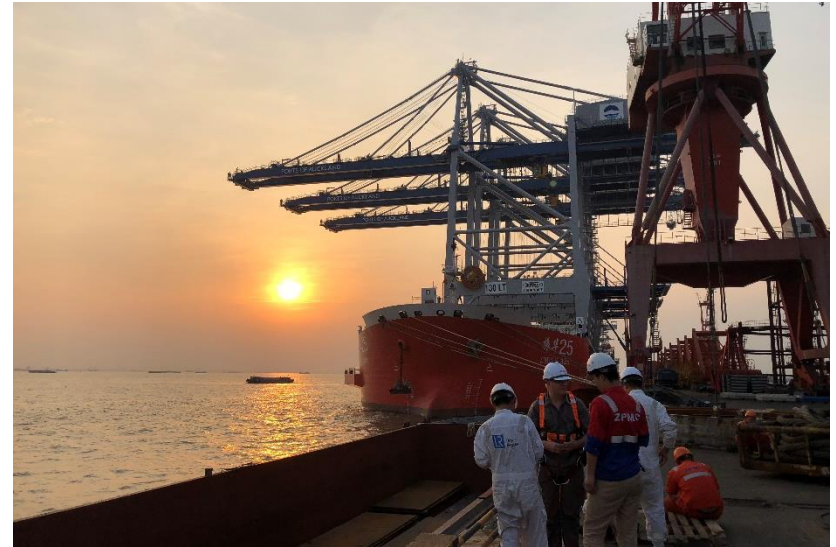
**Boom length** (waterside to tip): 70m

**Lift capacity:** Quadlift (up to four containers at once).  
A New Zealand first.

**Lift agility:** Able to lift containers stacked at different heights (up to 1.2m height differentiation). First port in the world to have this innovation.

**Safety:** Lash platforms to keep staff and heavy machinery separate. First port in New Zealand to have this industry leading safety feature.

**Energy saving:** Enough solar panels to power an average Kiwi home and 100% LED lighting.





# Community Feedback

## Operational Noise – Nigel Ironside



# Community Feedback

**Light Emissions – Jordan Hurinui**



## Agenda Item 8

