



PORTS OF
AUCKLAND
TĀMAKI HERENGA WAKA



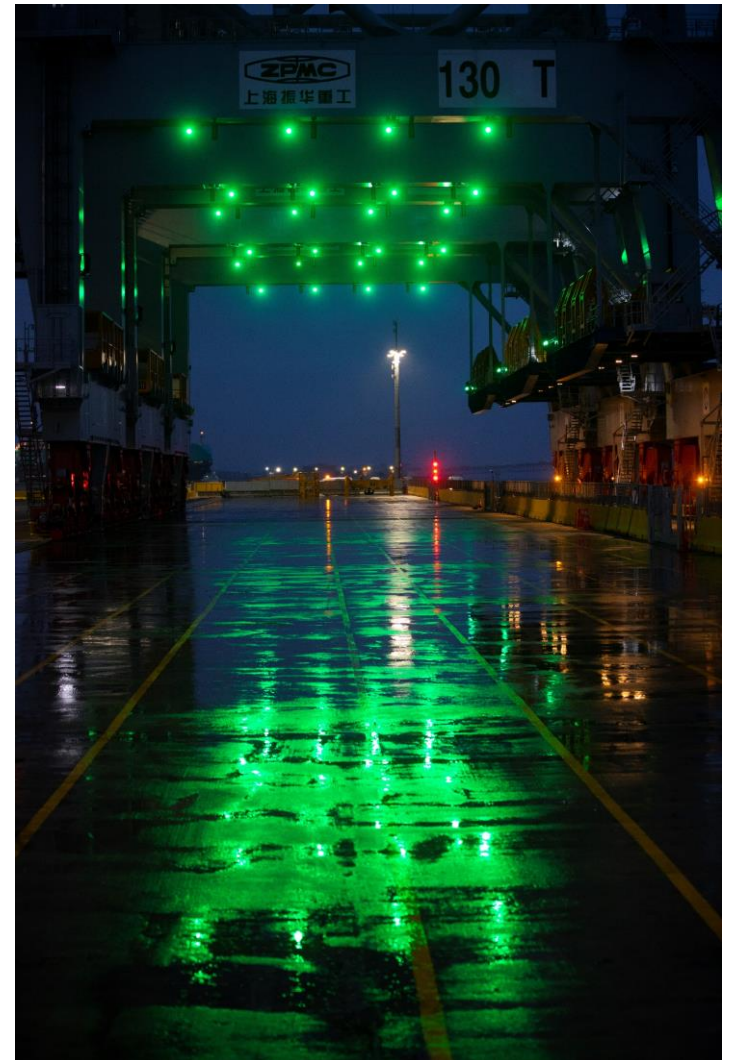
Community Reference Group

9 September 2020

Welcome

Agenda

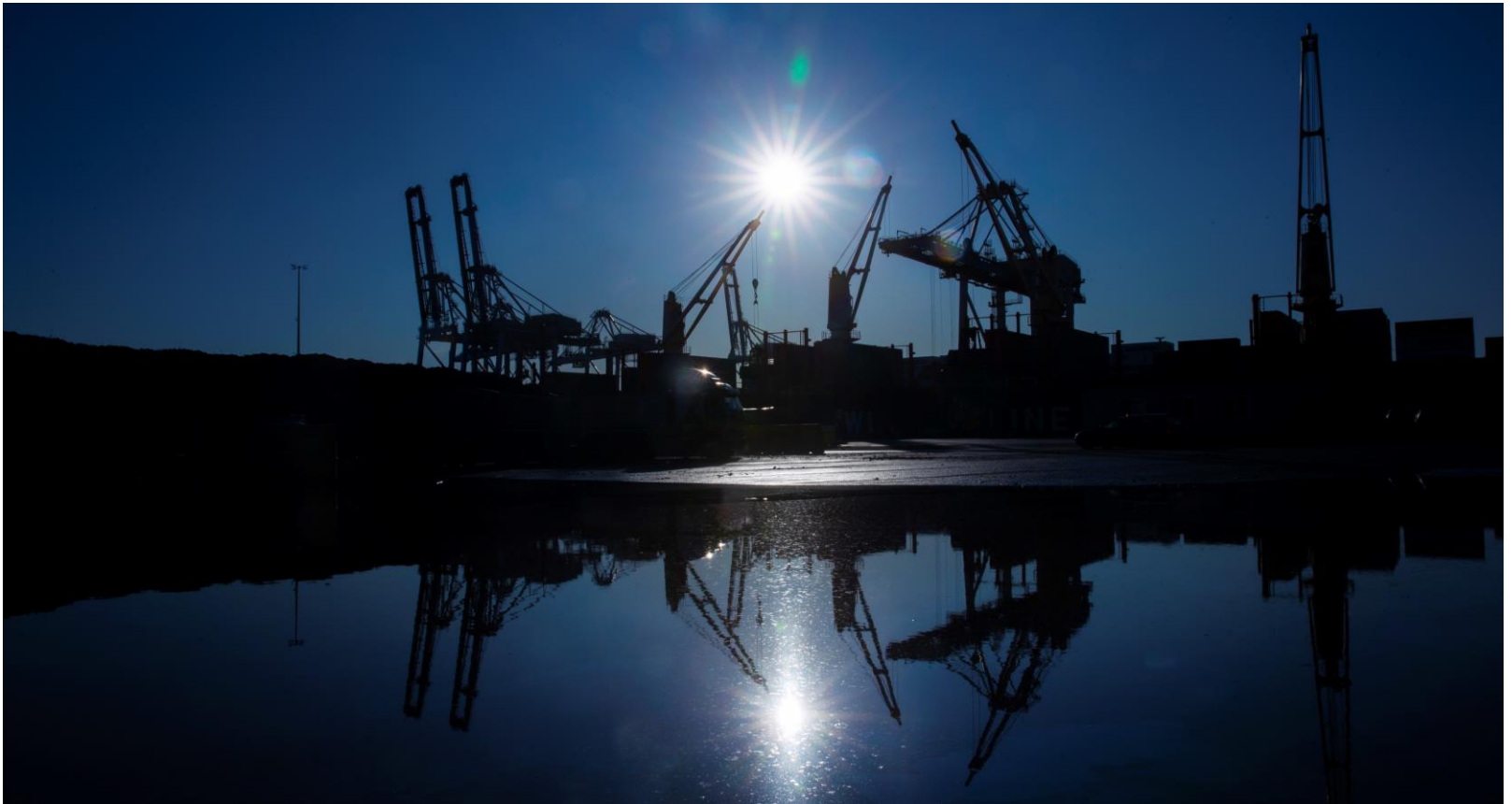
- 5.30pm Welcome
- 5.35pm – General business update – Tony Gibson
- 5.45pm – Car handling building – Alistair Kirk
- 5.55pm Channel deepening & disposal of dredged material – Alistair
- 6.05pm – Air quality monitoring – Nigel Ironside
- 6.15pm – Heavy Scrap Metal ex Glenbrook export – options to mitigate extreme loading noise
- 6.25pm – The Strand – AT/NZTA plans
- 6.35pm – POAL property on lower Gladstone Rd. Six-unit apartment block to be built opposite
- 6.45pm – AOB
- 7.00pm – Farewell



Business update

Business update

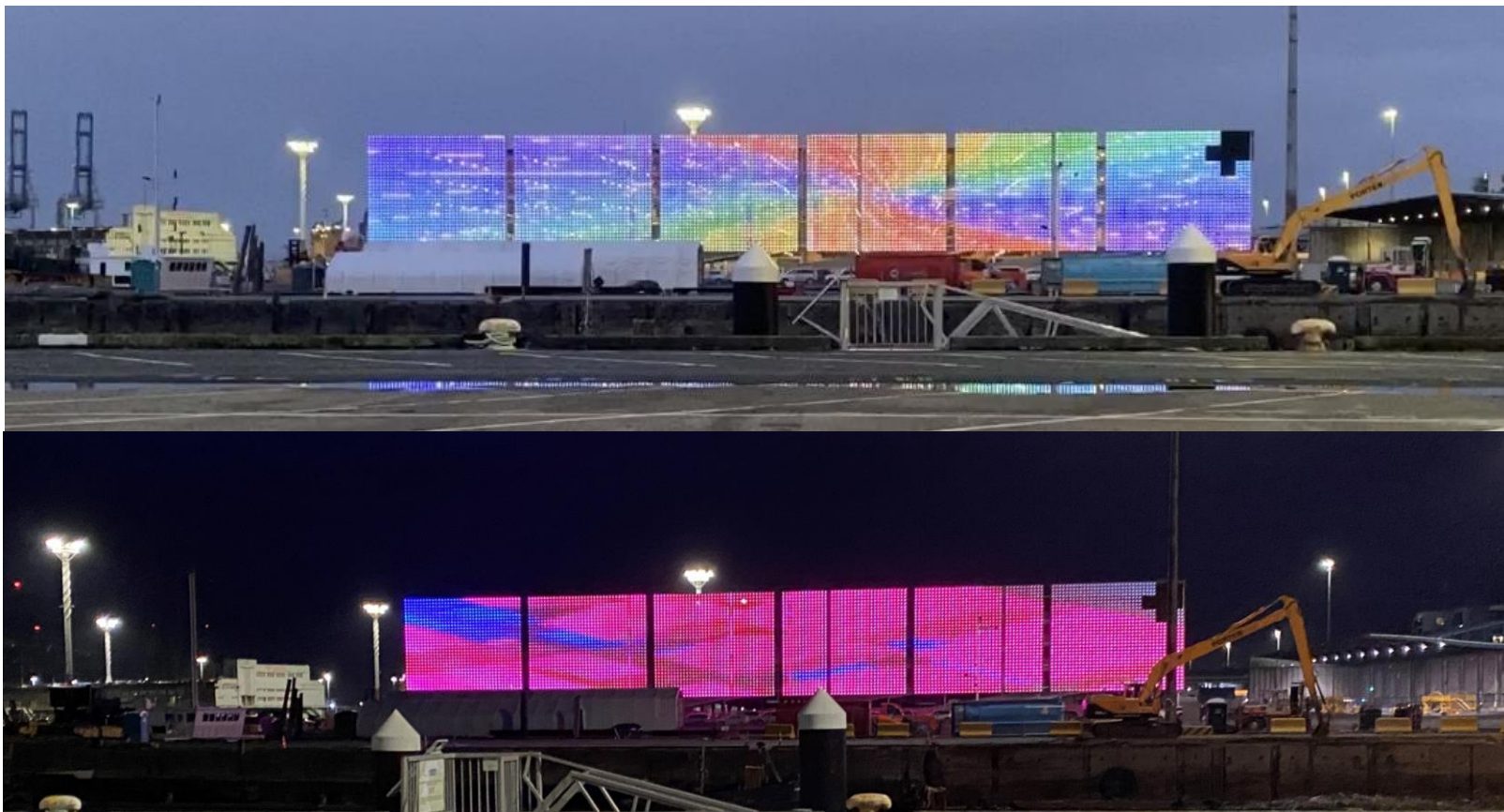
Where we're at



Car handling building

Car Handling Building

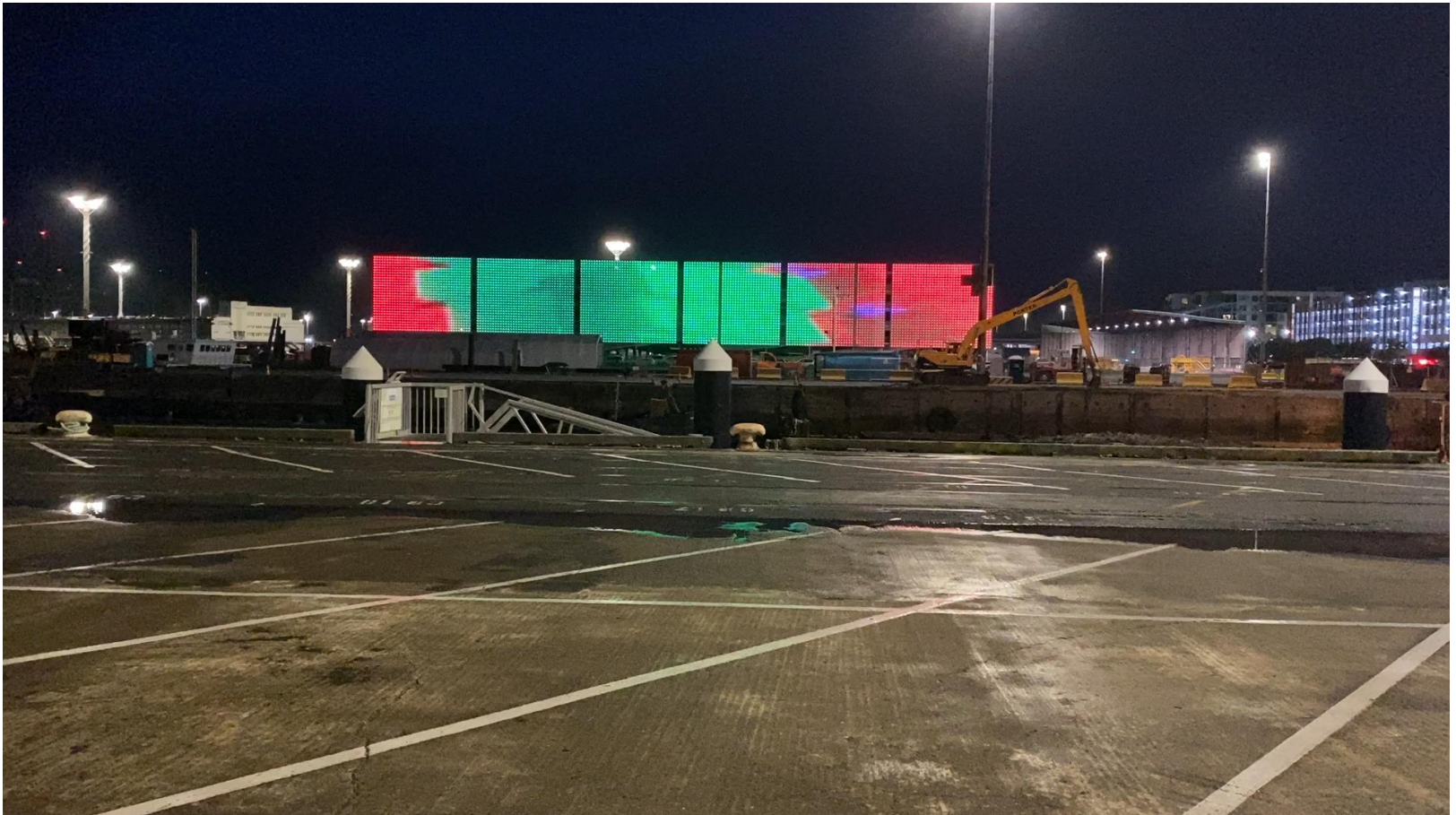
Construction update



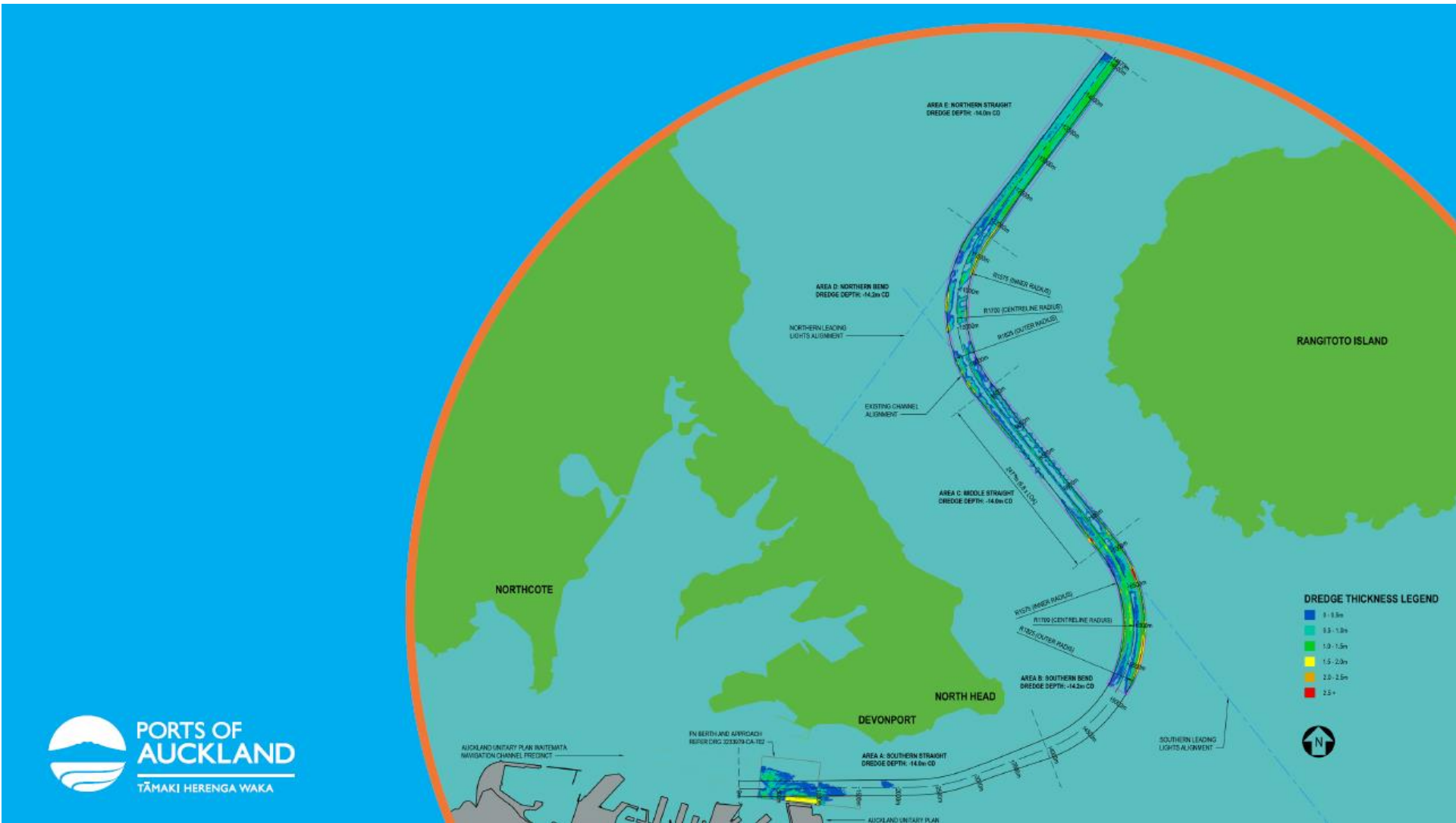
Car handling building

Car Handling Building

Construction update



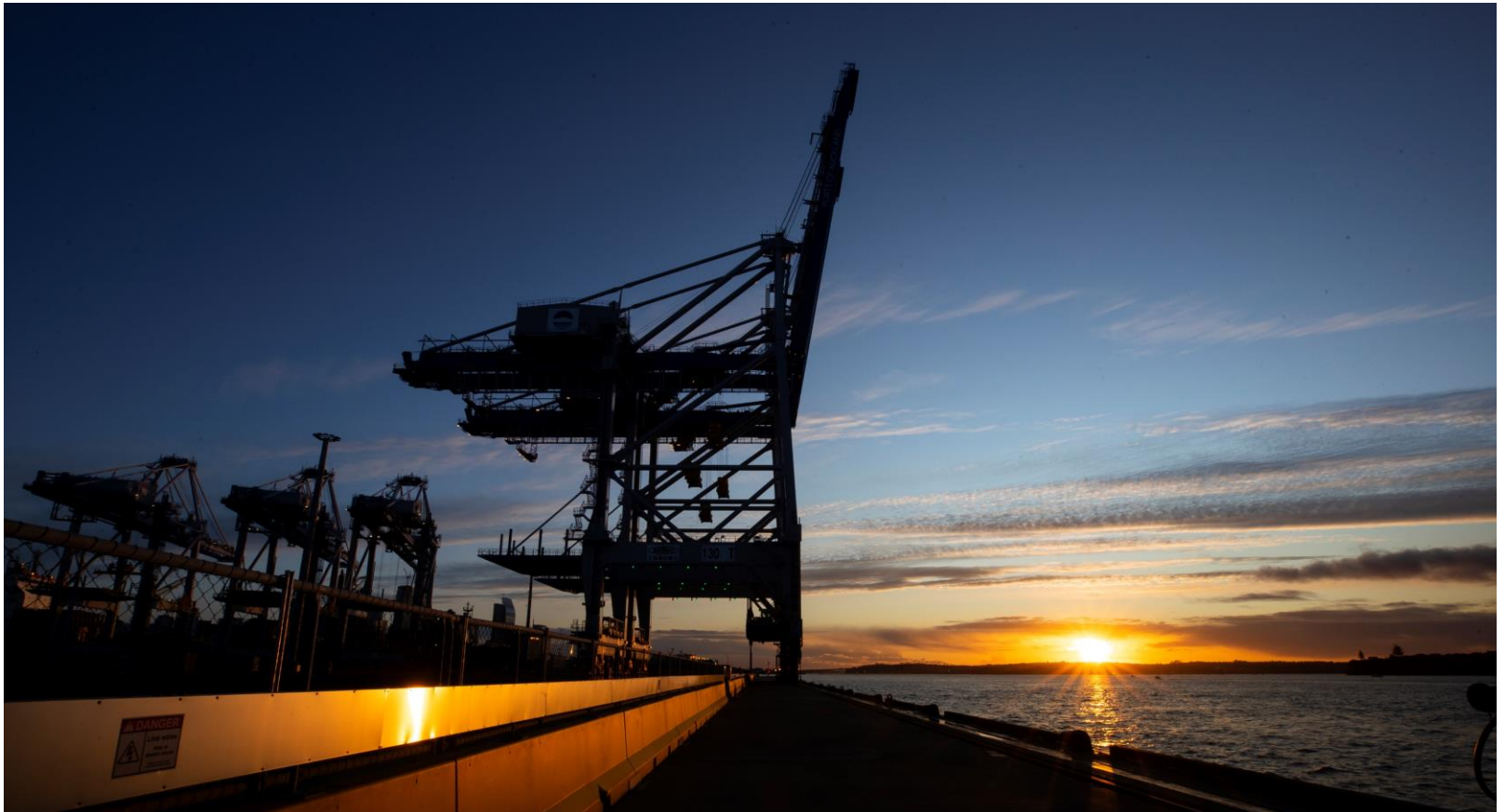
Channel deepening and disposal of dredged materials



Air quality monitoring

Air quality monitoring

Update

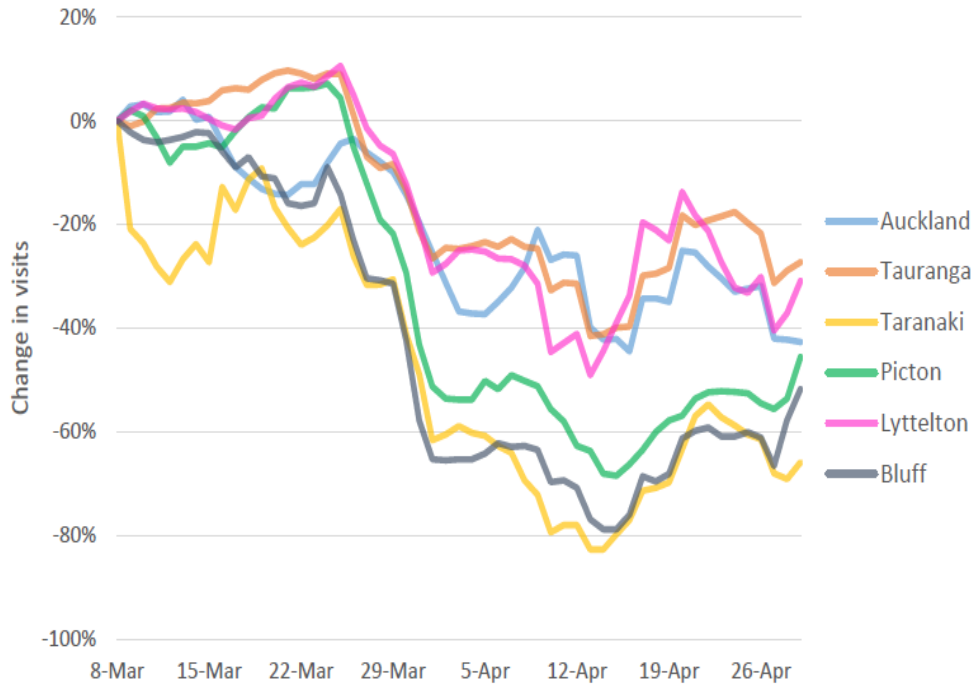


Changes to air pollution levels in Auckland attributed to port activities during the SARS COVID-19 pandemic lockdown

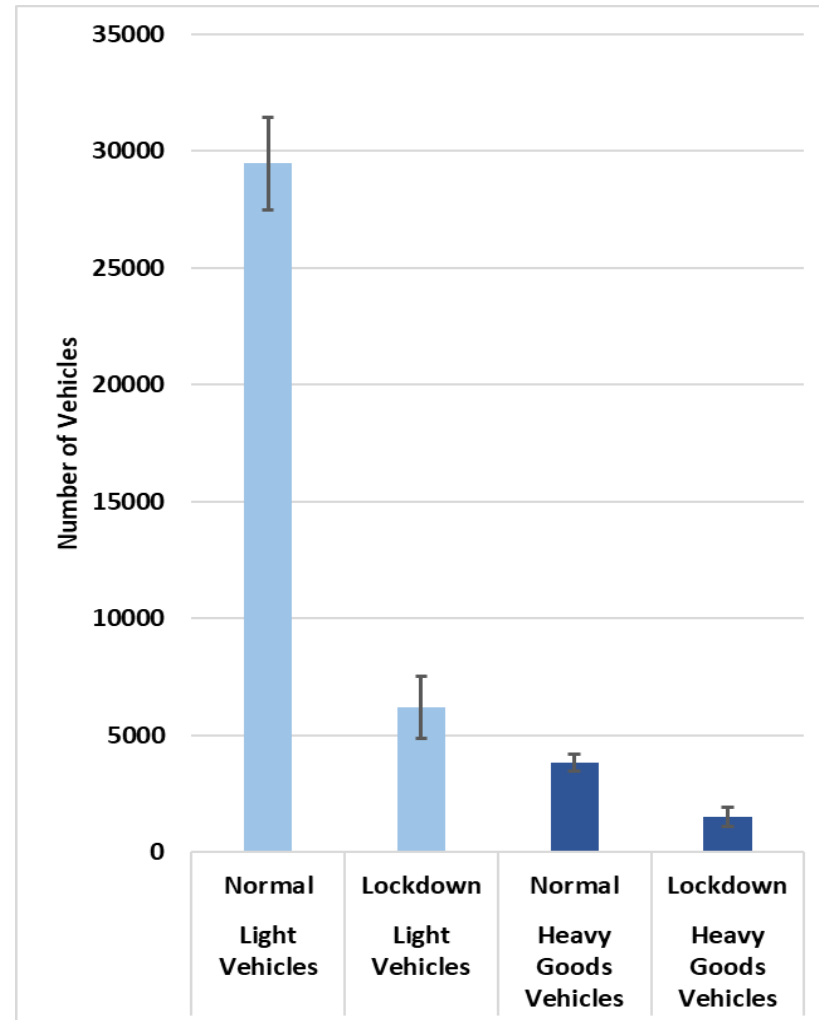
Some preliminary results

Air quality monitoring

Change in traffic volume on Auckland's State Highway 1 and Heavy Vehicle Visits to POAL during Lockdown



Source: EROAD



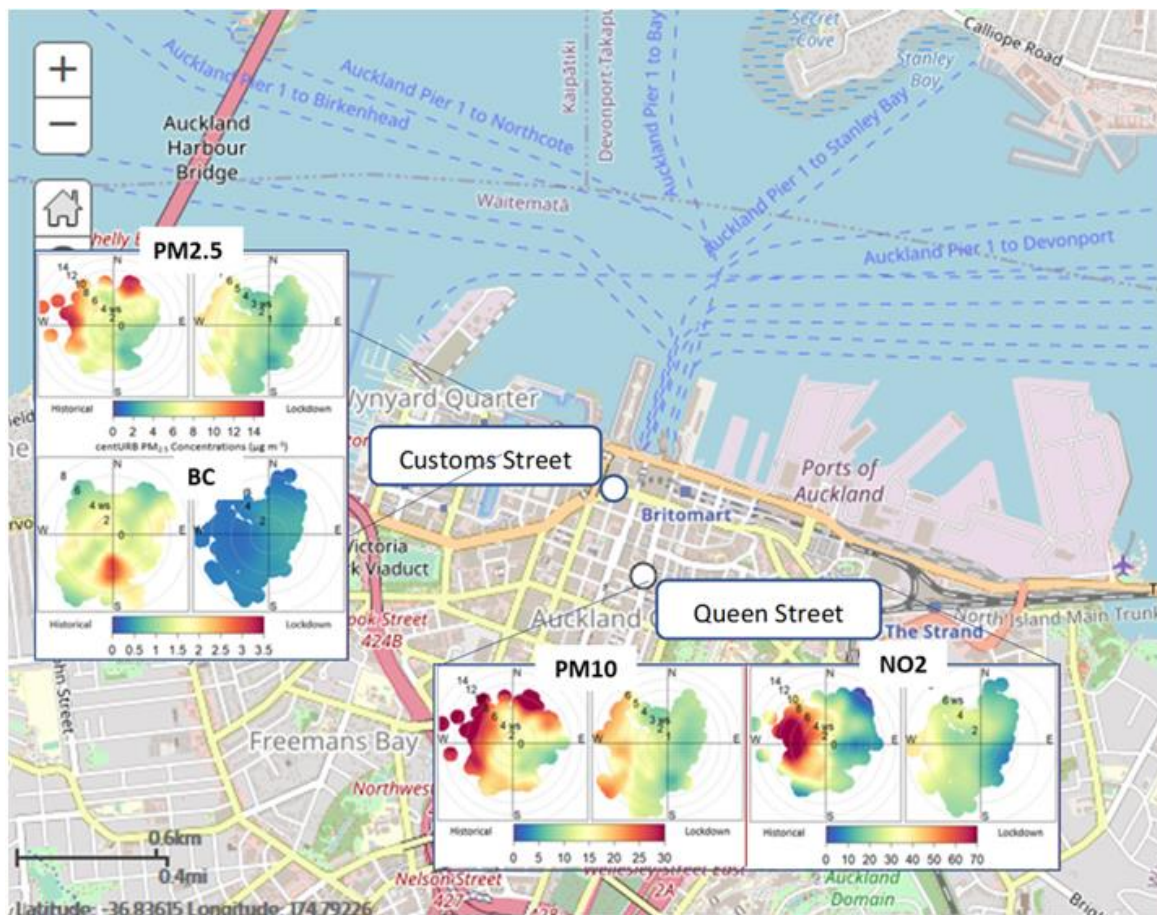
Air quality monitoring

ambient air quality standards and Auckland ambient air quality targets

Contaminant	Concentration ($\mu\text{g}/\text{m}^3$)	Time average	Source
Sulphur dioxide	570 (not to be exceeded)	1-hour	NESAQ
	350 (9 permissible exceedances)	1-hour	NESAQ
	120	24-hour	AUP
Nitrogen dioxide	200	1-hour	NESAQ
	100	24-hour	AUP
	40	Annual	AUP
PM ₁₀	50	24-hour	NESAQ
	20	Annual	AUP
PM _{2.5}	25	24-hour	AUP
	10	Annual	AUP

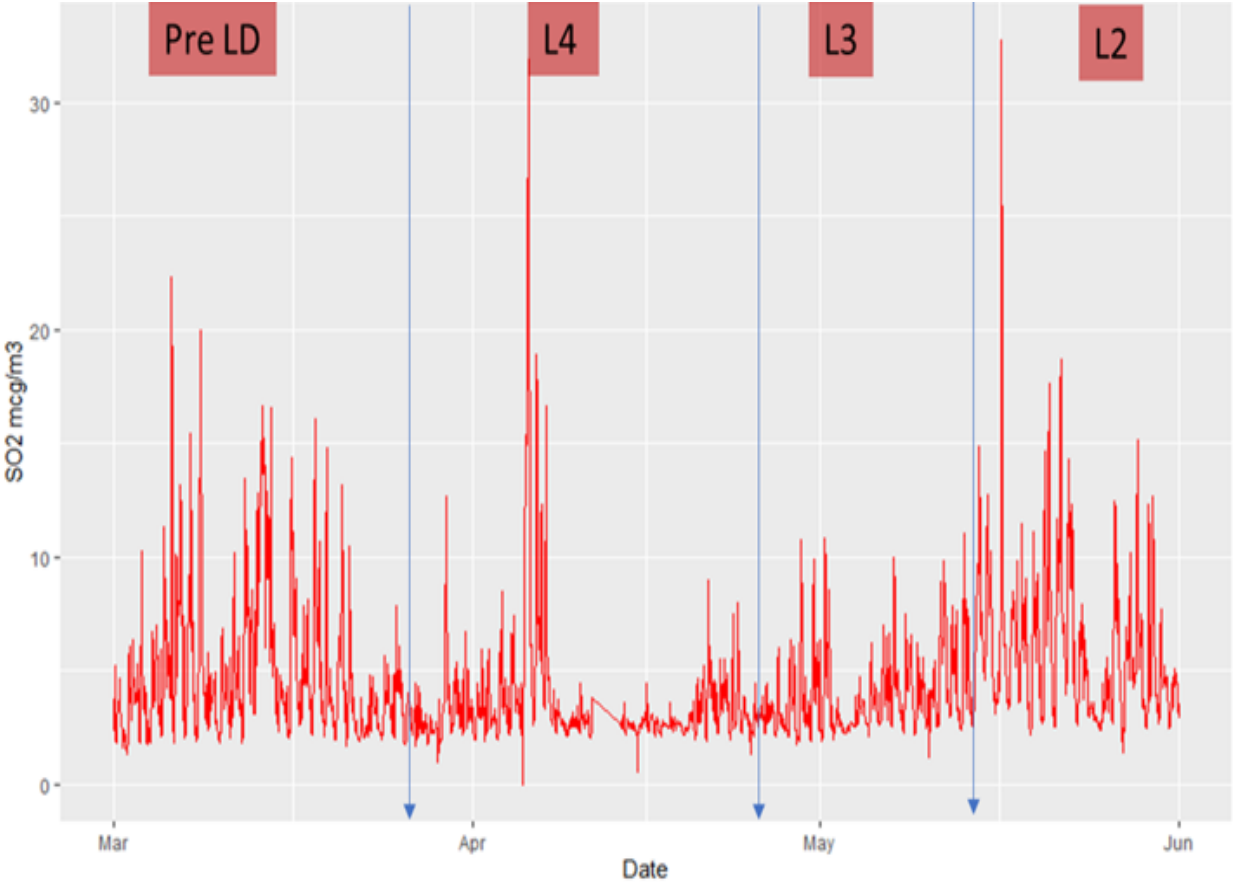
Air quality monitoring

Polar plots of Black Carbon (BC) taken from the Customs Street site and polar plots of PM10, PM2.5, NO2 from Queen Street. The historical (February, March & April, 2016-2020) is shown on the left and Level 4 lockdown (26th March 2020 - 17th April 2020) period shown on the right.



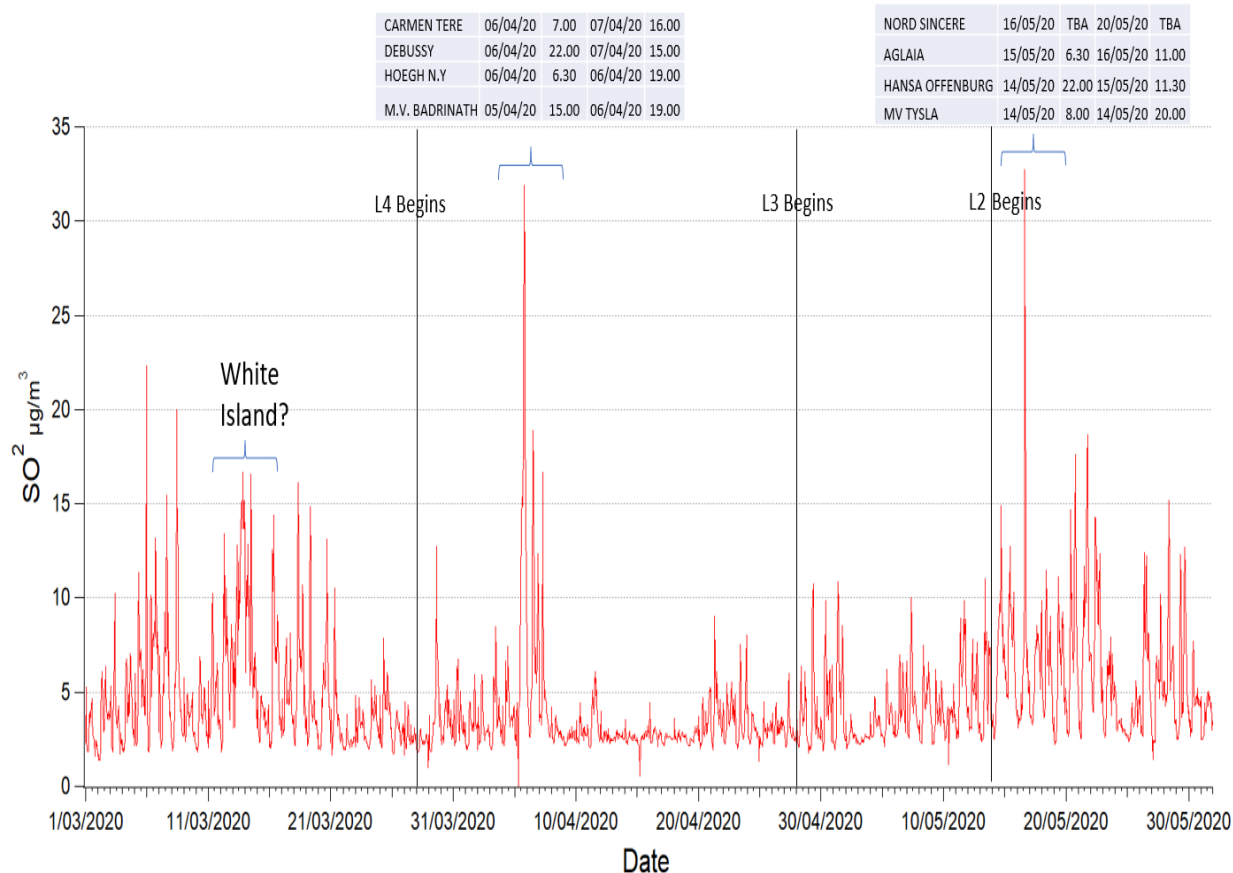
Air quality monitoring

SO2 concentrations from 1st March until 31st May 2020. Each lockdown level is sectioned, accordingly



Air quality monitoring

SO₂ concentrations with peaks associated with shipping in port



Air quality monitoring

NO₂ concentrations from 1st March until 31st May 2020

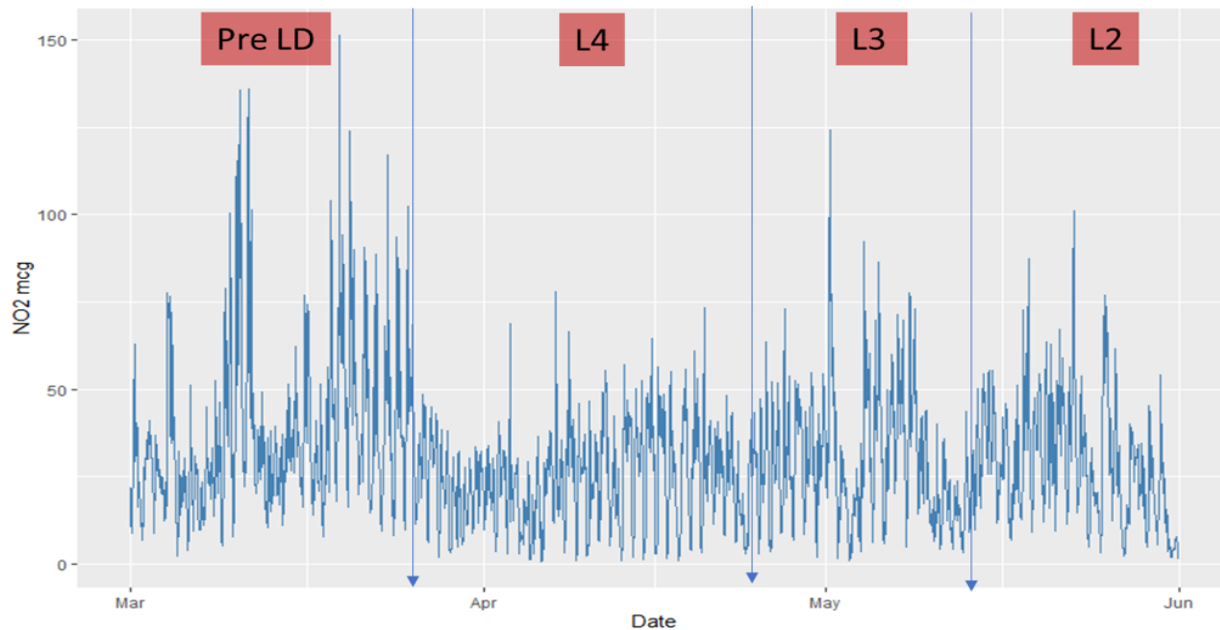
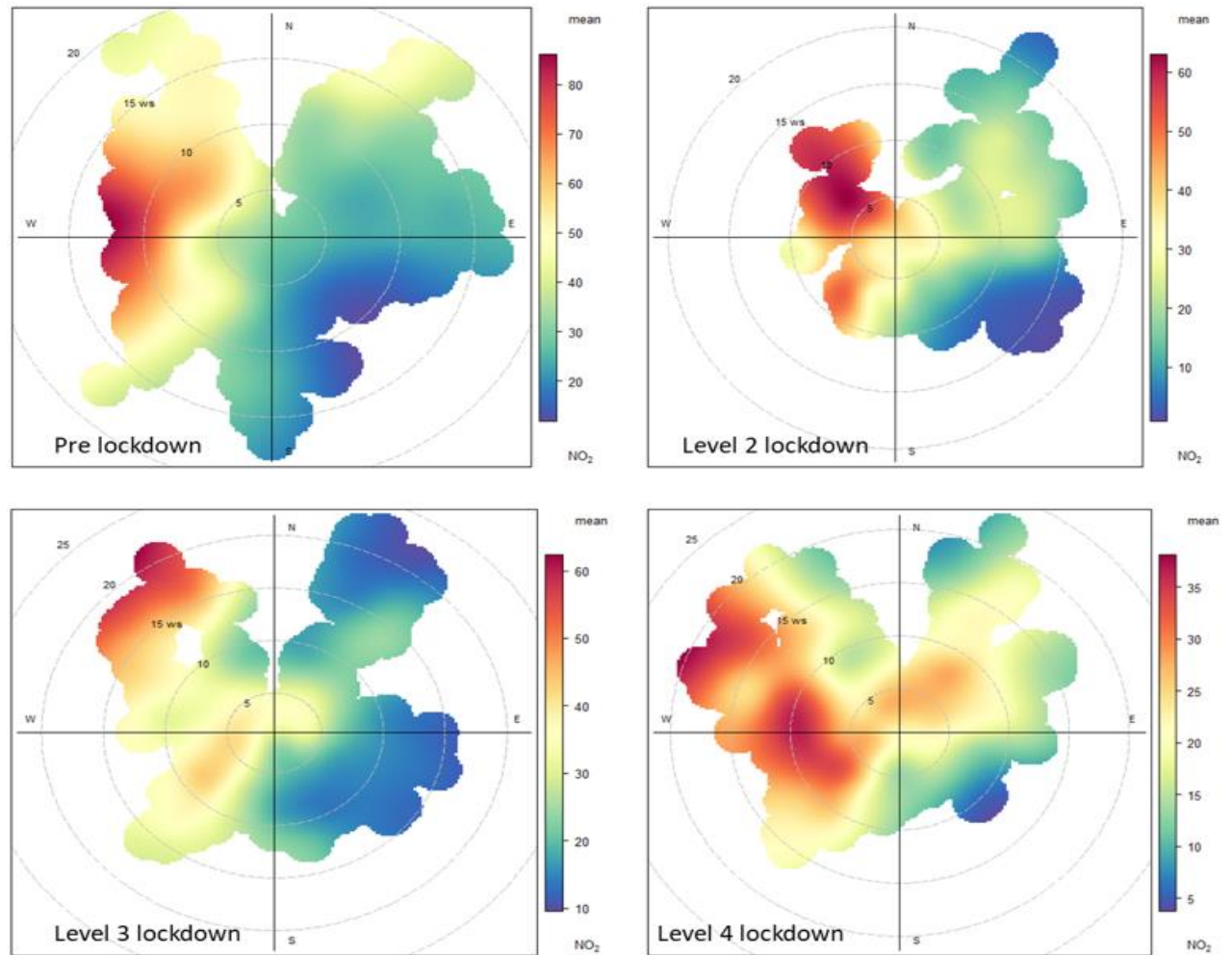


Figure 3.18: NO₂ concentrations from 1st March until 31st May 2020. Each lockdown level is sectioned, accordingly.

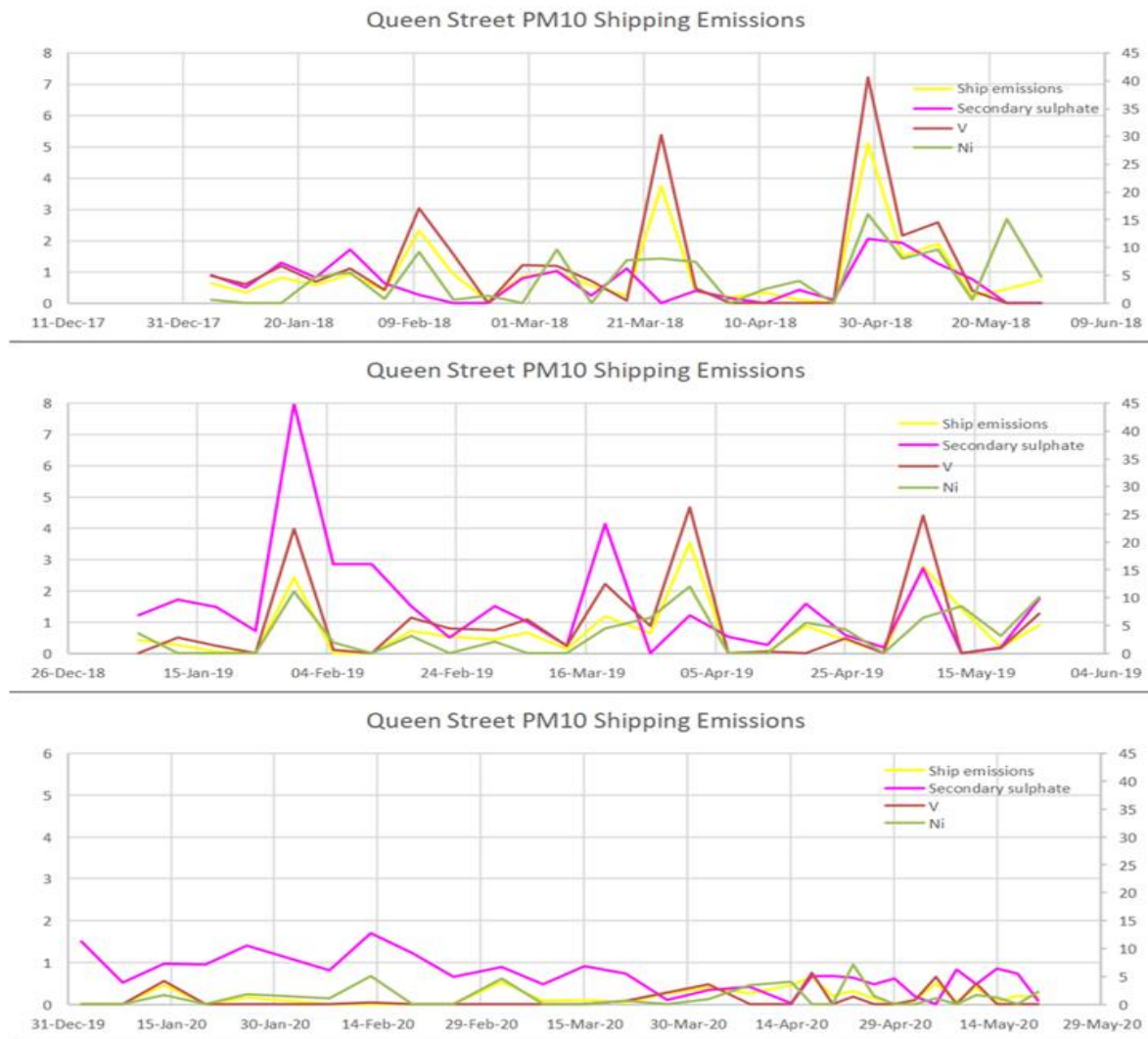
Air quality monitoring

NO₂ concentrations for each level of lockdown



Air quality monitoring

Plots for non-sea salt sulphate, nickel and vanadium content, the yellow line is the retrieved from filters collected at the Queen Street monitoring site in central Auckland. Data from the beginning of 1st January 2018- 15th May 2020 has been analysed by GNS Science on behalf of Auckland Council.



Requested agenda items

Update

- Luke Niue: Heavy Scrap Metal ex Glenbrook export – options to mitigate extreme loading noise
- Luke Niue: The Strand – AT/NZTA plans
- Luke Niue: POAL property on lower Gladstone Rd. Six-unit apartment block to be built opposite



Any other business?



Haere rā

Community Reference Group | 9 September 2020

