



# Community Reference Group

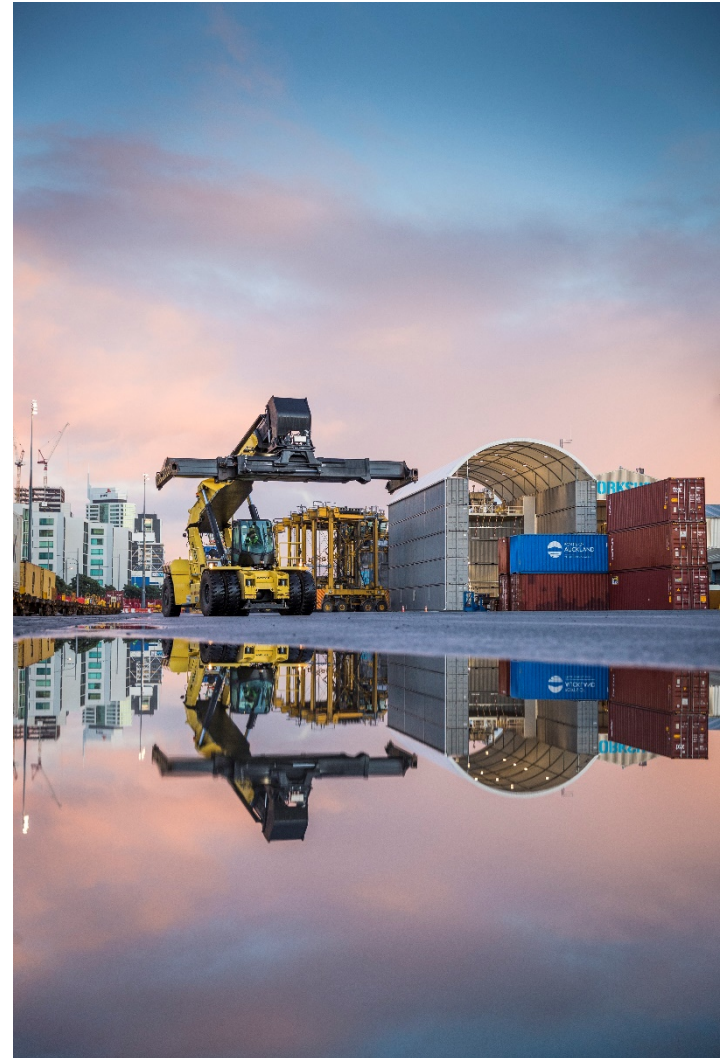
10 June 2020

# Welcome

---

## Agenda

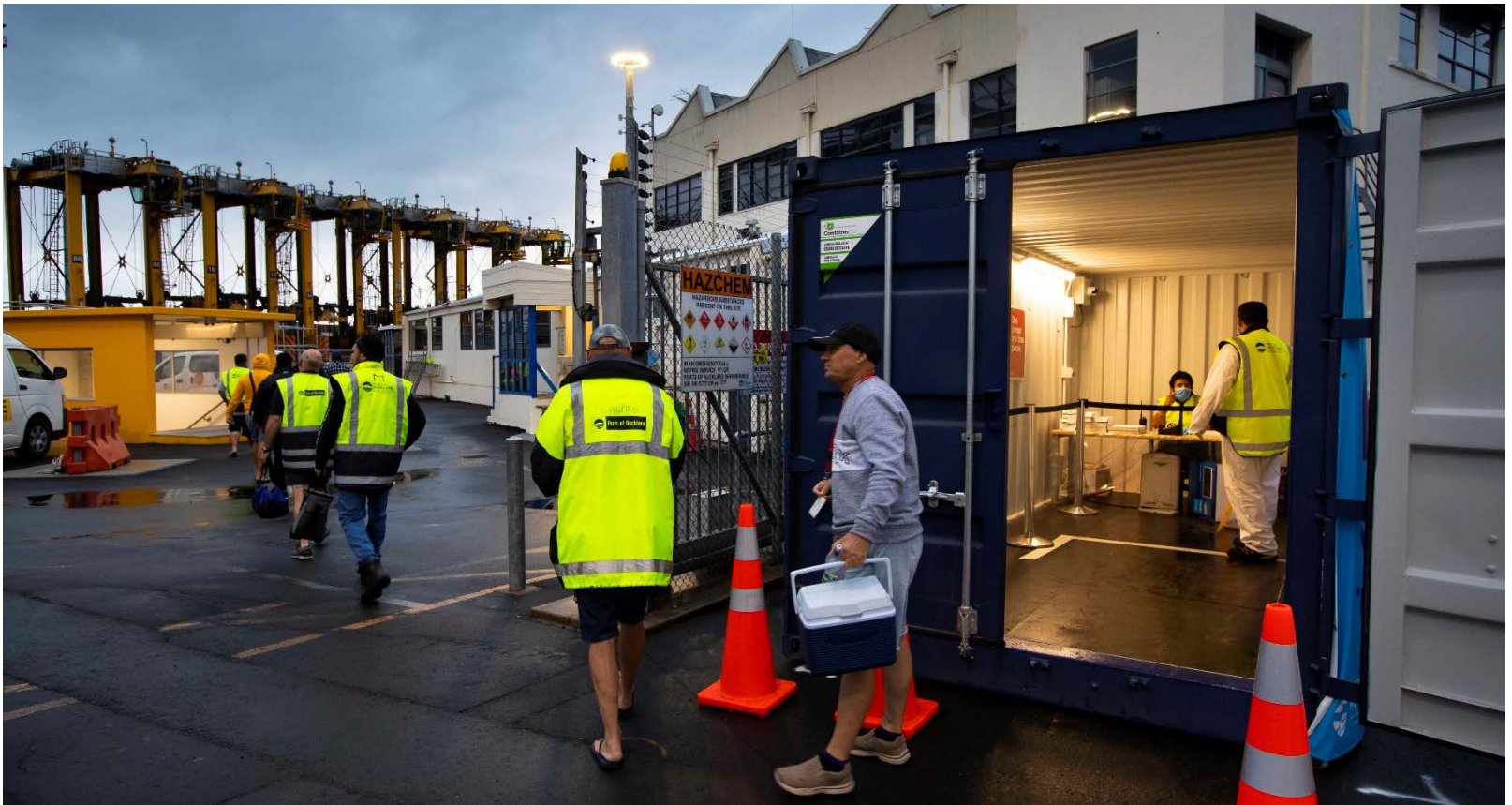
- 5.30pm Welcome
- 5.35pm – Business update – Tony Gibson
- 5.50pm – Automation update – Tony
- 6.00pm – Car handling building – Alistair Kirk
- 6.10pm Channel deepening & disposal of dredged material – Alistair
- 6.15pm – Cruise and Queens dolphin – Alistair
- 6.20pm – Hydrogen – Rosie Mercer
- 6.25pm – Air quality monitoring – Nigel Ironside
- 6.35pm – E-tug – Matt Ball
- 6.40pm – AOB
- 6.45 – Farewell



# Business update

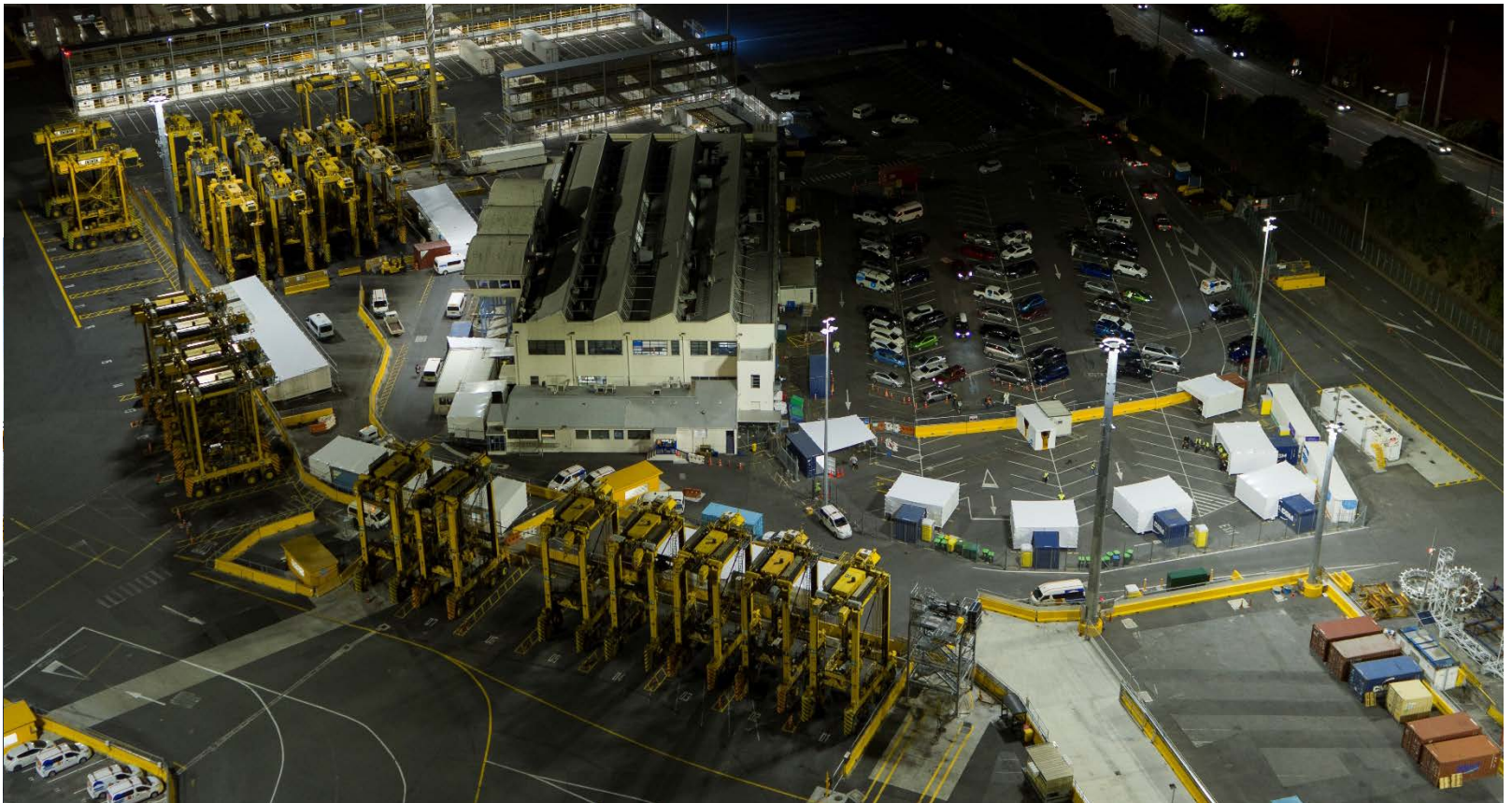
## COVID-19

Business as un-usual



# Business update

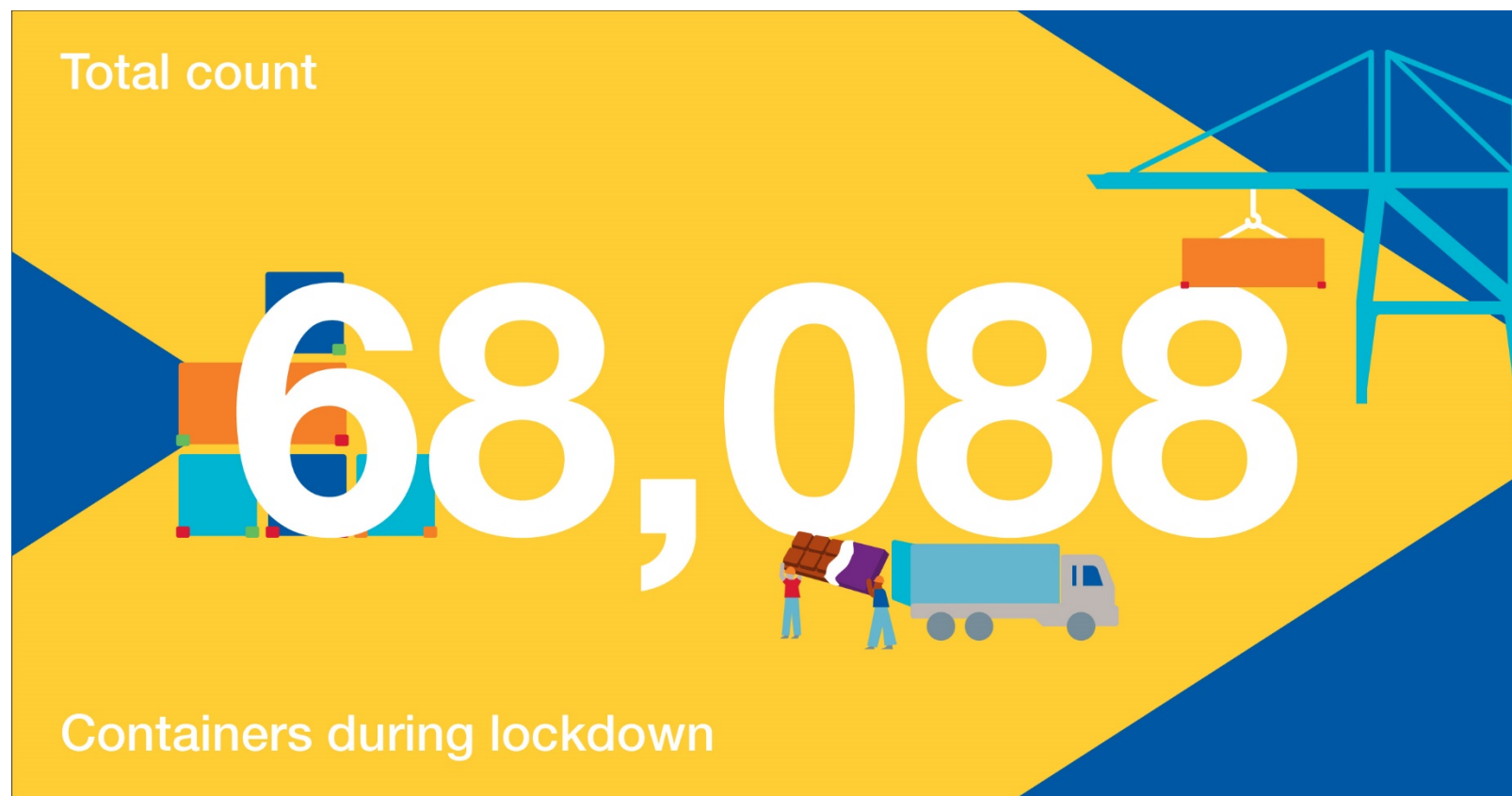
## COVID-19



# Business update

## Productivity

Working hard to support Aucklanders



# Business update

---

## Six crane operation, ongoing crane trials

Container terminal



# Business update

---

## Automation

A phased approach



# Car handling building

## Car Handling Building

Construction update





# Car handling building



# Car handling building

## Southern Façade

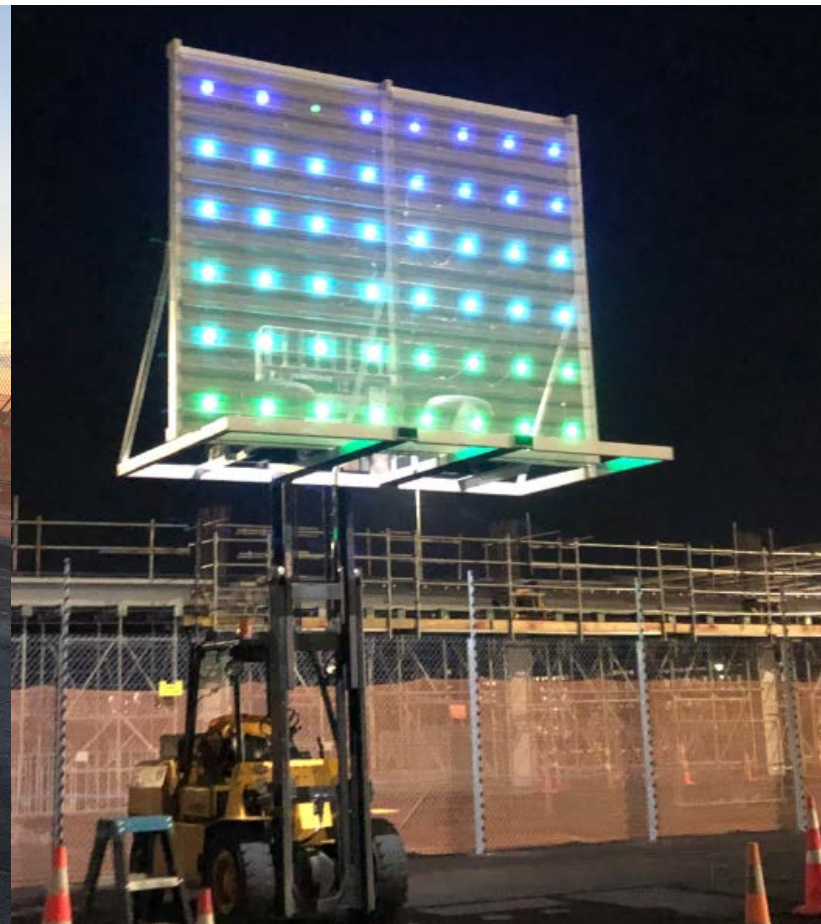
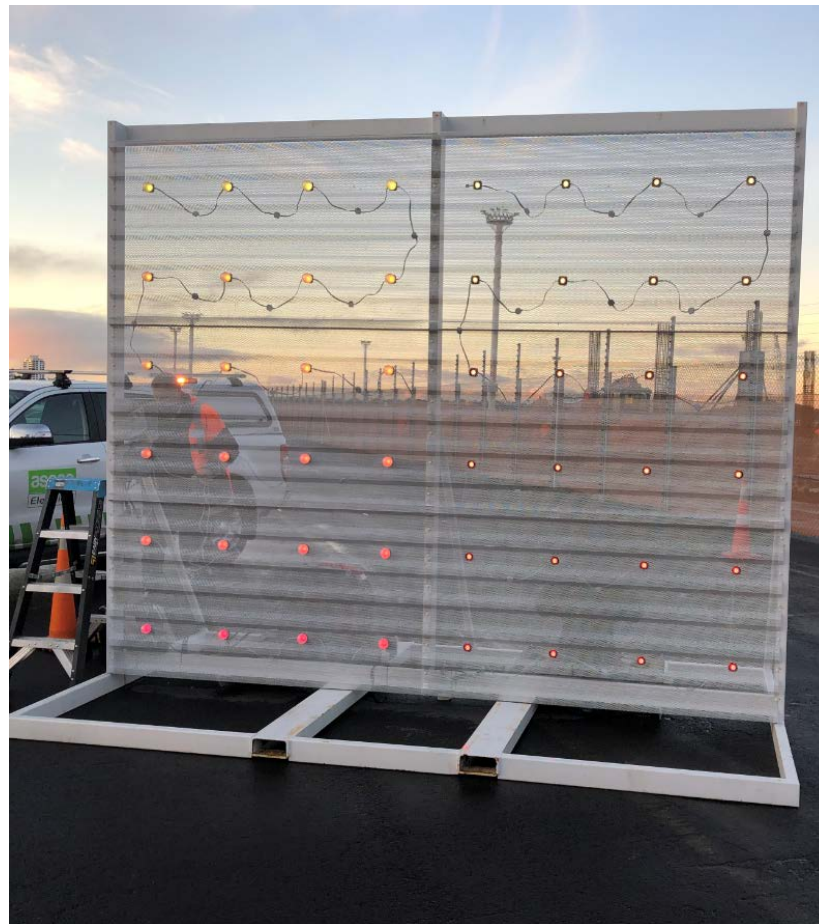
The world's largest soil-based vertical garden



# Car handling building

## Western Façade

### LED lights



# Car handling building

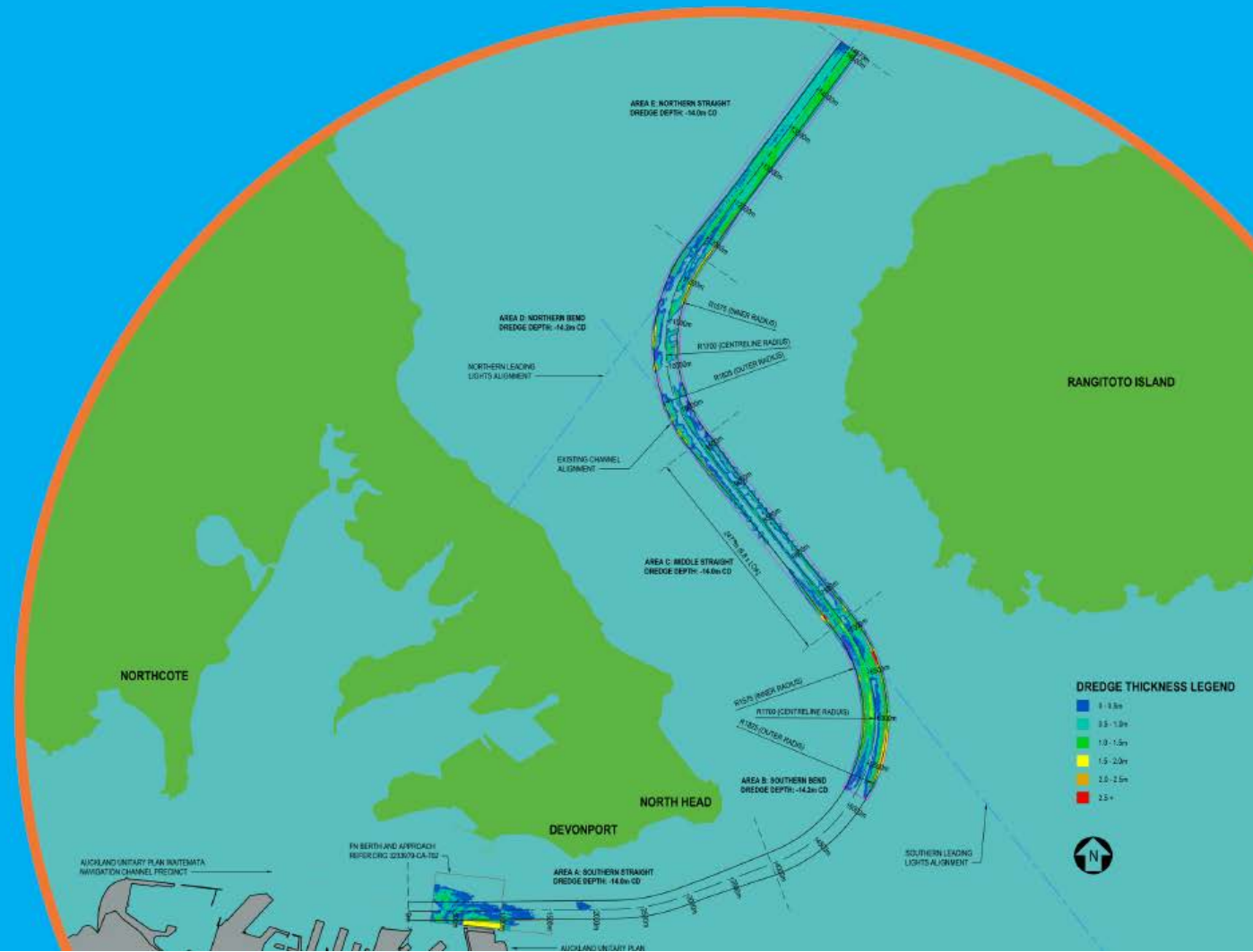
---

## Car Handling Building

### Rooftop



# Channel deepening and disposal of dredged materials



# Cruise

---

## Cruise

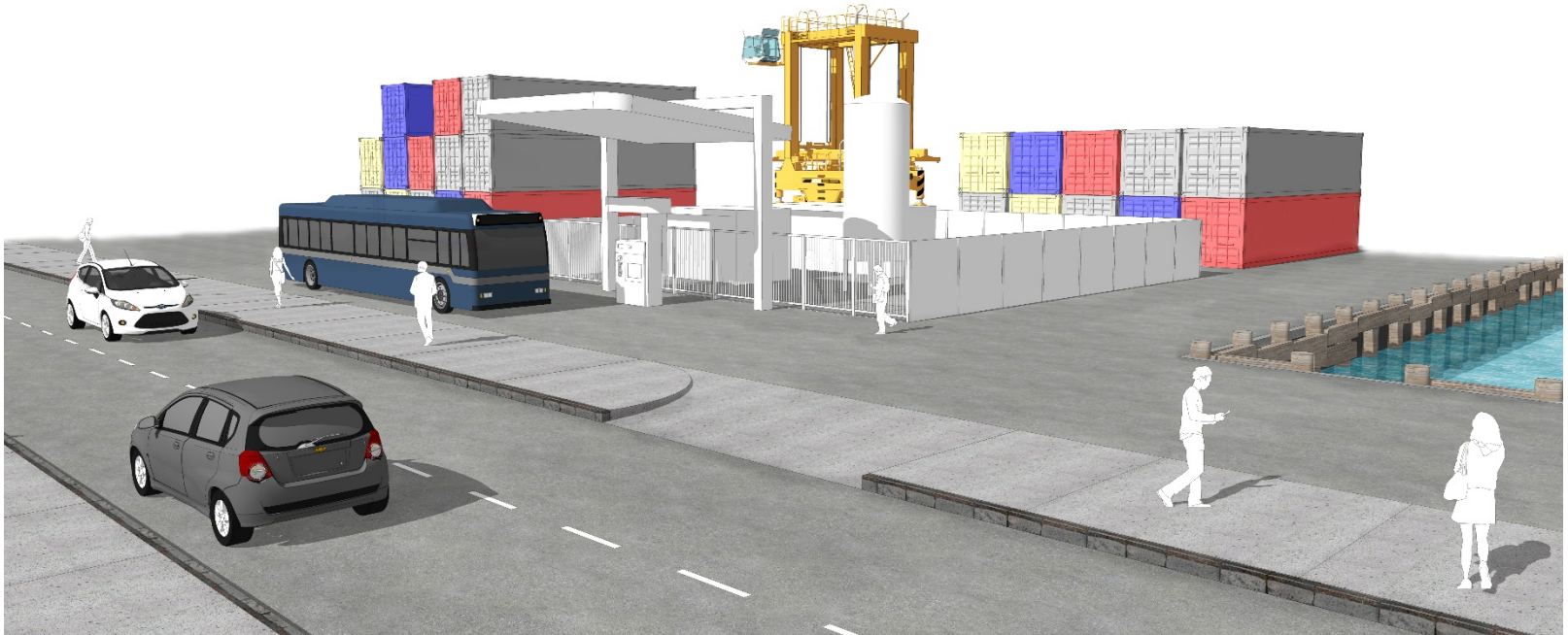
Industry update and Queens wharf dolphin



# Hydrogen

## Hydrogen

### Project update



# Air quality monitoring

---

## Air quality monitoring

Update





## E-tug

The world's first ship handling electric tug

3,351 submissions from across the country - Kaitia to Invercargill – and further afield – including Australia, Bangkok and Samoa.

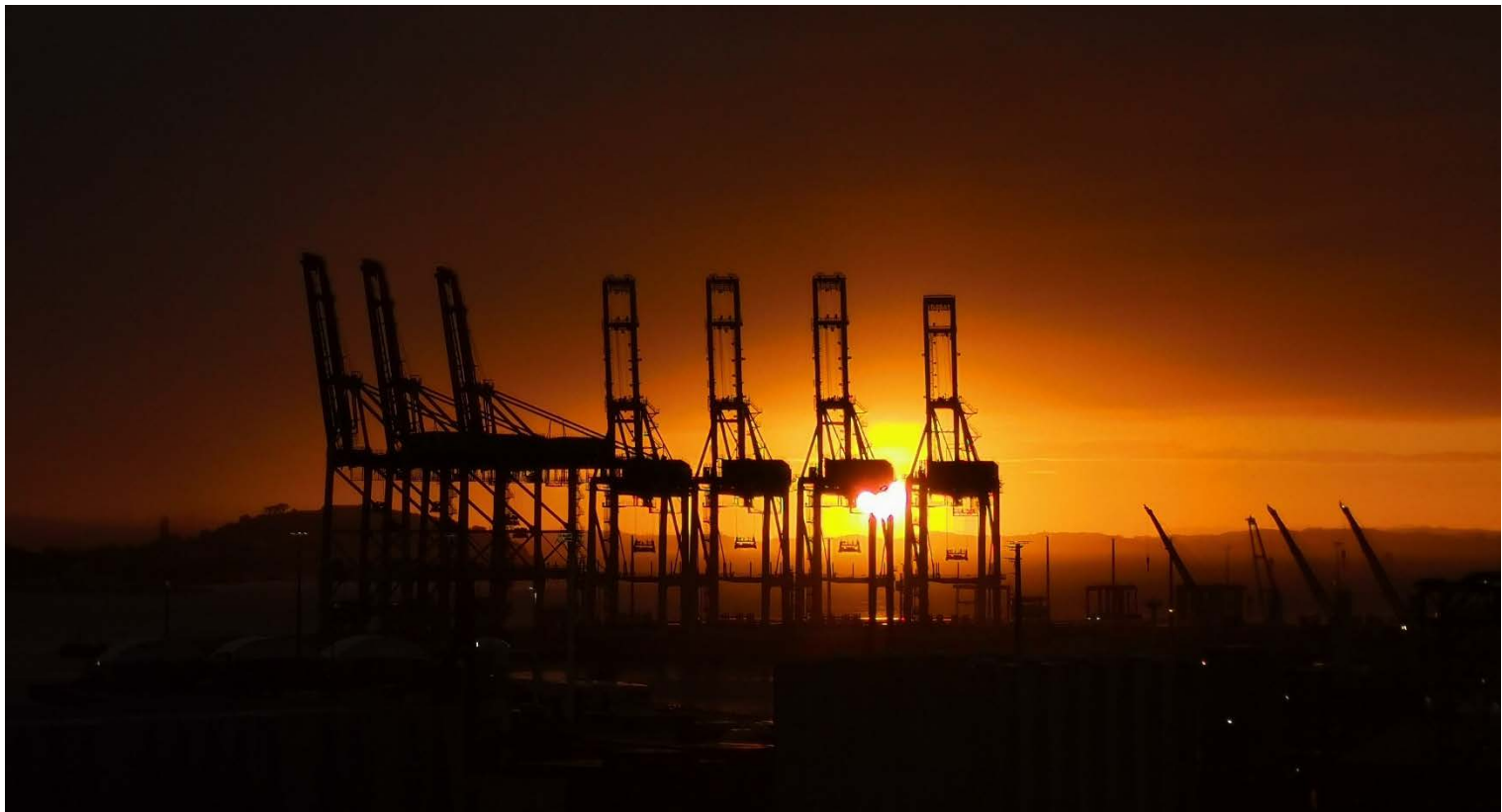
Top 4 names for public vote:

- Ārahi
- E.T.
- Hiko
- Sparky

[www.poal.co.nz/name-the-tug](http://www.poal.co.nz/name-the-tug)



Any other business?



---

# Haere rā

Community Reference Group | 10 June 2020

