

Vessel	Arr/Dep	Date	Pilots Name		Berth	Shift	Ship	Bth
		Time	Capt.		Bow		Bow	

VESSELS DETAILS				Tidal Information				
Prop No		Rudder		Year Built		Time	Height	Range
CPP/Fix		Thr. Fwd		LOA				
MAX DRAFT		Thr. Aft		Beam				
		Rotation		HOA				

Main Channel	DW	Planned Approach Area	Berth Calcs on Arrival	Berth Calc next 24 hours
Min. Channel Depth		Min. Planned Approach	Berth Depth	Side To
(+) Tide @		(+) Tide @	(+) Tide @	Berth depth
Available Depth		Min. Planned App Depth	Depth at Berth	(+) Min Tide
Maximum Draft		Maximum Draft	Maximum Draft	Avail depth
10% of Max Draft		Min UKC	UKC at berth (-) 0.4 or 0.5	(-) 0.4 or 0.5
Required Depth		Required Depth	Required Depth	Max Draft
UKC (Dynamic)		UKC (Dynamic)	UKC (Static)	This Max draft shall not be exceeded during the lowest tide of the vls stay
Is avail. Depth ≥ Reqd?		Has Approach Depth been checked?	This is the available UKC (Static) on the Vessels berthing only	
Est. Tide Strength		Est. Tide Strength		

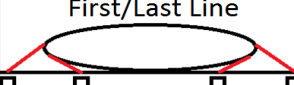
Constrained By Draft?	Y	N	Fresh Water?	Y	N	FW Position	F	M	A	Ladder	P	S	L/N Port
-----------------------	---	---	--------------	---	---	-------------	---	---	---	--------	---	---	----------

The bridge team is requested to monitor the Pilots actions at all times. DO NOT hesitate to question him, if in doubt.

For assistance or EMERGENCY in port, contact "Auckland Harbour Control" on VHF channel 9 or 12.

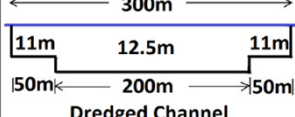
PoAL operates at MSL 1, unless notified otherwise. Contact PFSO on 027 229 6144

First/Last Line



One(1) Line at a time

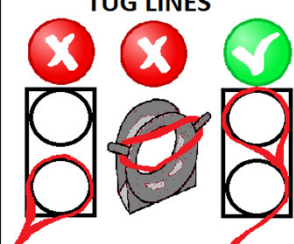
Dredged Channel



ALL COURSES ARE INDICATIVE ONLY AND MAY BE MODIFIED FOR WIND, TIDE AND TRAFFIC

Comments	Y/N	Harbour traffic discussed?
Passage Plan exchanged?		Anchors clear, man fwd?
Courses been agreed upon?		Pilot card been sighted?
Defects been noted?		VHF set on Ch. 12?

TUG LINES

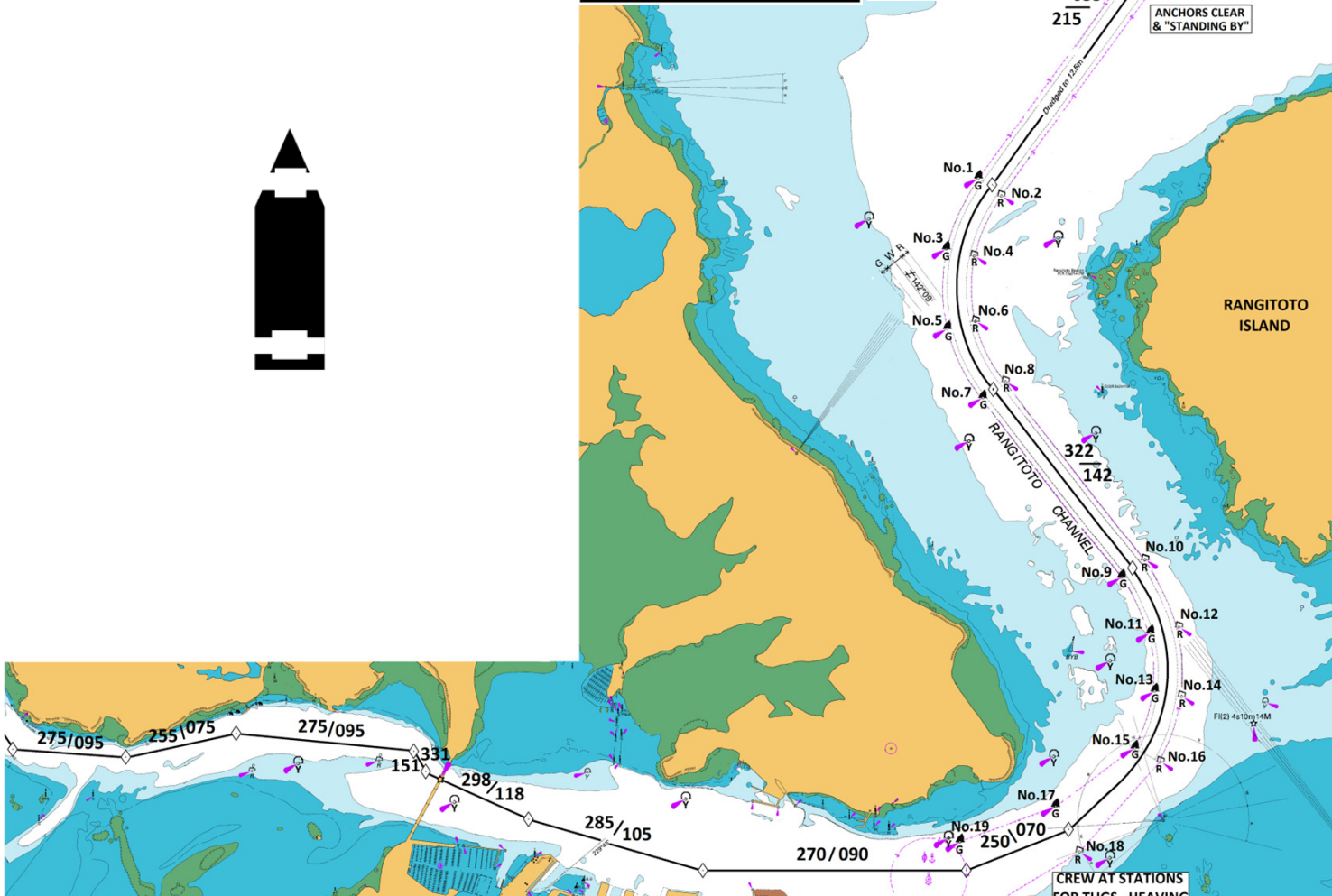


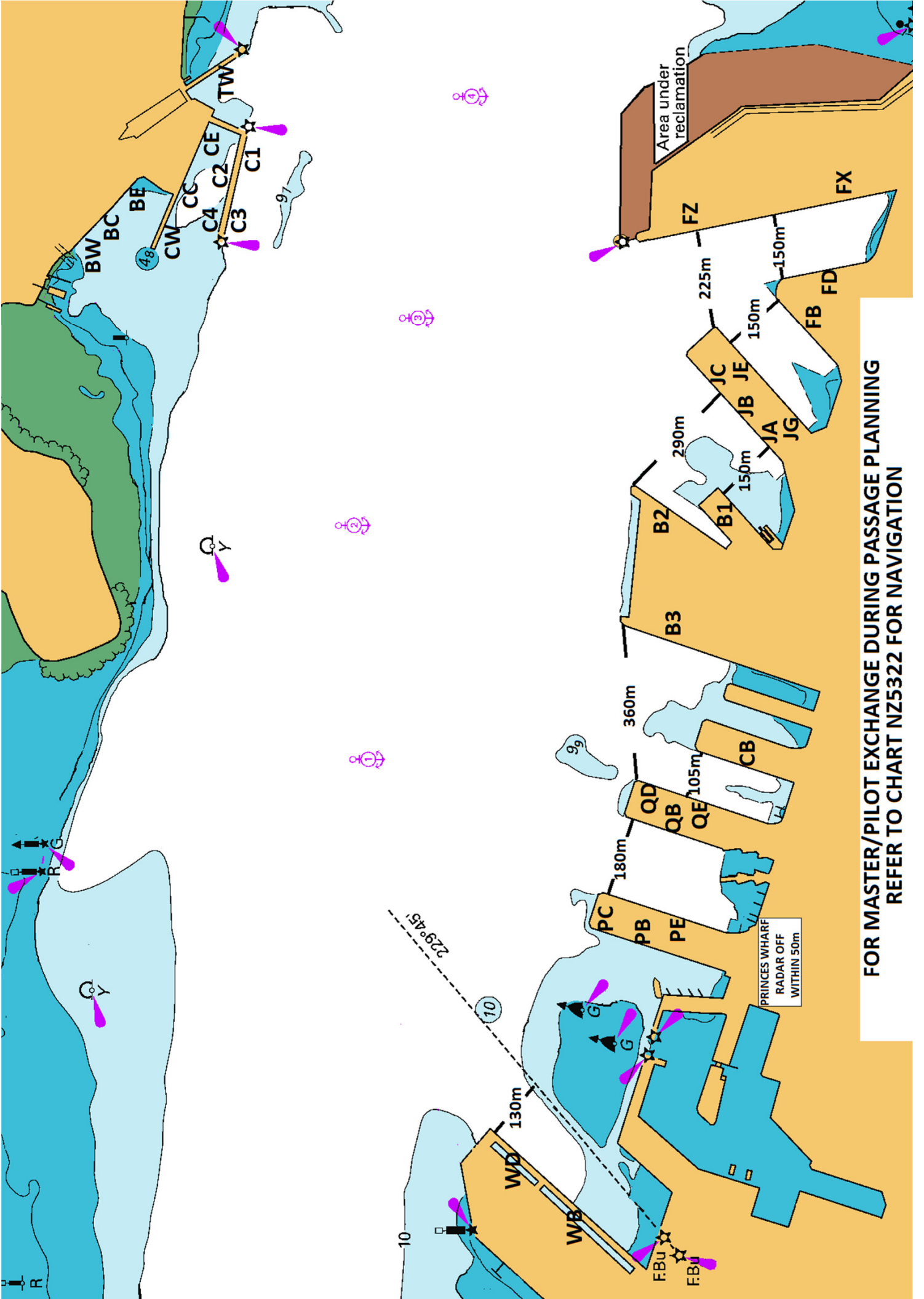
Tug Pull (t)

Hauraki	70
Waka Kume	50
Waipapa	50
Daldy	22

ALPHA PILOT BOARDING GROUND
36 44'.20 S
174 50'.50 E

ANCHORS CLEAR & "STANDING BY"





**FOR MASTER/PILOT EXCHANGE DURING PASSAGE PLANNING
REFER TO CHART NZ5322 FOR NAVIGATION**